

---

# EPSON DISCPRODUCER™ PP-100AP

---

Are you looking for a system which can be used to print on blank CDs or DVDs in large quantities and at very low costs? The Epson Discproducer™ PP-100AP has been developed specifically to meet these requirements. It can print up to 95 discs per hour and is perfect for copying services, large businesses or music, TV and video producers.

## Cost-effective mass printing

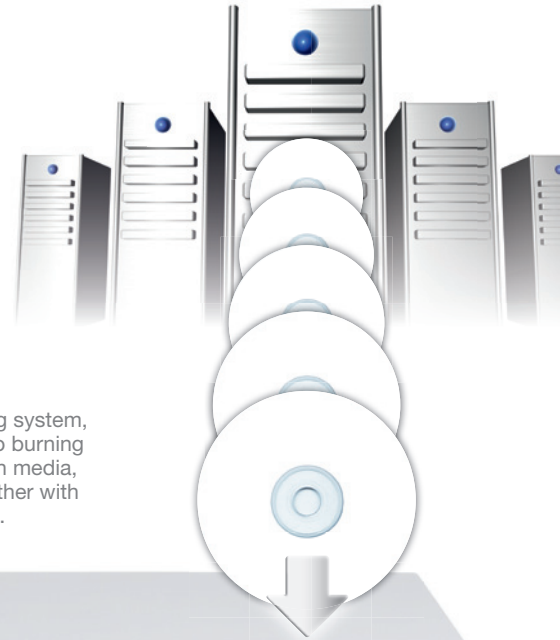
**Fast:** With the PP-100AP, up to 50 media per hour can be printed in brilliant photo quality. If faster printing is more important to you, then the rate can even be increased to as much as 95 media per hour.

**Print capacity:** Epson makes mass printing easy. Up to six PP-100APs can be controlled in parallel from one PC. In this way, you can increase your print capacity at each workstation to 300 media per hour with the highest quality setting or 570 media per hour in high-speed mode.

**Long-lasting:** The PP-100AP has been designed to have a **service life of more than 100,000 discs**. The user-friendly maintenance cartridges need to be changed after approx. 30,000, 60,000 and 90,000 discs. This will keep your PP-100AP in top technical condition. The sealed housing which protects against dust and the patented AcuGrip™ robotic arm also contribute to the exceptionally long service life.

**Photo quality:** Epson's Micro Piezo™ technology with six different colours also offers exceptional quality with large print quantities. Impress your clients with razor-sharp and intensely coloured images printed on high-gloss, smudge-proof and waterproof media recommended by Epson.

**Economical:** Enjoy the benefits of extremely low print costs. The low purchase price of the PP-100AP, the large-volume ink tanks and the very long service life make this possible. One ink set can print the entire surface area of well over 1000 discs. Separate colour cartridges minimise your operating costs as only cartridges that are actually empty need to be replenished.

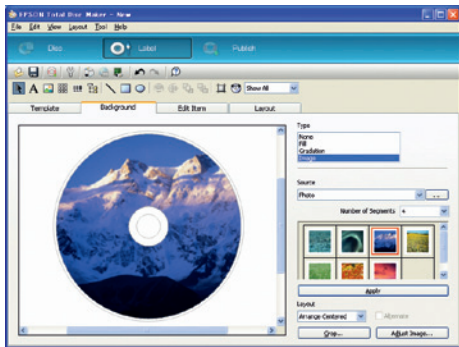


As it is a pure printing system, the PP-100AP has no burning drive. In order to burn media, it must be used together with external drive towers.



## EFFORTLESS EASE OF USE

The Epson Discproducer™ PP-100AP is just as easy to operate as any office printer. The use of the software and hardware is intuitive, which saves time and leaves you free to concentrate on your day-to-day work.



With the Total Disc Maker software, it is easy to create your own printed image for CD/DVD. Whether you want to use photographs, graphics, text or pre-existing templates: There are virtually no restrictions on your creativity.



In the final step, you can select the ideal quality and speed setting for your project:  
**Quality:** 50 media per hour  
**Speed:** 70 media per hour  
**High-speed:** 95 media per hour



Six separate colour cartridges ensure an intensely coloured printed image.



The maintenance cartridge is very easy to change.

## TECHNICAL SPECIFICATIONS

<b>Print speed</b>	50 discs/hour (level 1); 75 discs/hour (level 2); 95 discs/hour (level 3)
<b>Print head</b>	Black ink: 180 Nozzles; Color ink: 180 Nozzles × 5 colours
<b>Print resolution</b>	Level 1 (high-resolution): 1440 dpi × 1440 dpi; Level 2: 1440 dpi × 720 dpi; Level 3 (high-speed): 720 dpi × 720 dpi
<b>Stacker 1, 2, 3</b>	50 discs (It's possible to print 100 discs without stopping by using these stackers)
<b>Stacker 4</b>	5 discs
<b>Interfaces</b>	USB 2.0 high-speed × 1
<b>Inkset capacity</b>	1000 discs or more (room temperature, Ø 45 to 116 mm, 16.7 % colour sharing, continuous printing, mode setting: highest resolution)
<b>Included Software</b>	Total Disc Maker to create, print and publish discs
<b>Required IT SW-environment</b>	Windows® 7 Home/Premium/Professional/Enterprise/Ultimate; Windows Vista® (SP1 or later) Home/Business/Enterprise/Ultimate; Windows® XP (SP2 or later) Home Edition/Professional; Windows® 2000 (SP4 or later) Professional
<b>Required IT HW-environment</b>	CPU: Pentium® 4, 1.4 GHz or higher or its compatible processor; Graphics: XGA or more, 65,536 colours or more Interface: Universal Serial Bus Specifications Revision 2.0, Transmission speed: 480 Mbps (High-Speed Device) (USB ports that use some ATI™ chipsets are not supported. Please refer to the detailed specifications.)
<b>Supported Media</b>	Outside diameter: 120 mm ± 0.3 mm; Inside diameter: 15 mm + 0.1/- 0 mm; Thickness: 1.2 mm + 0.3/- 0.1 mm; Form: supports common 12 cm discs. Specially-shaped discs are not supported. Surface: printable (high quality or glossy), for glossy discs only Epson recommended are supported.
<b>Rated voltage</b>	AC 100 V to A C240 V; Frequency: 50 Hz to 60 Hz
<b>External dimensions</b>	Width: 377 mm; Depth: 465 mm; Height: 348 mm (Excluding the cables); Weight: approx. 22 kg
<b>Temperature and relative humidity</b>	Operating: 10 °C to 35 °C, 20 % to 80 % (no condensation); Storage: - 20 °C to 40 °C, 5 % to 85 % (no condensation); Transporting: - 20 °C to 60 °C, 5 % to 85 % (no condensation)
<b>Standards supported</b>	Europe: CE Marking, EMC: 2004/108/EC, EN55022 class B, Safety: EN60950, TÜV; Russia: GOST-R
<b>Product life</b>	100,000 discs (With Level 3, Level 2 and Level 1 bi-directional printing), 5 years (at room temperature)
<b>Maintenance box life</b>	30,000 discs when printing 3000 discs/month. Value may not be reached if manual cleaning is run more than necessary.

EPSON COVERPLUS

Discproducer™

AcuGrip™